

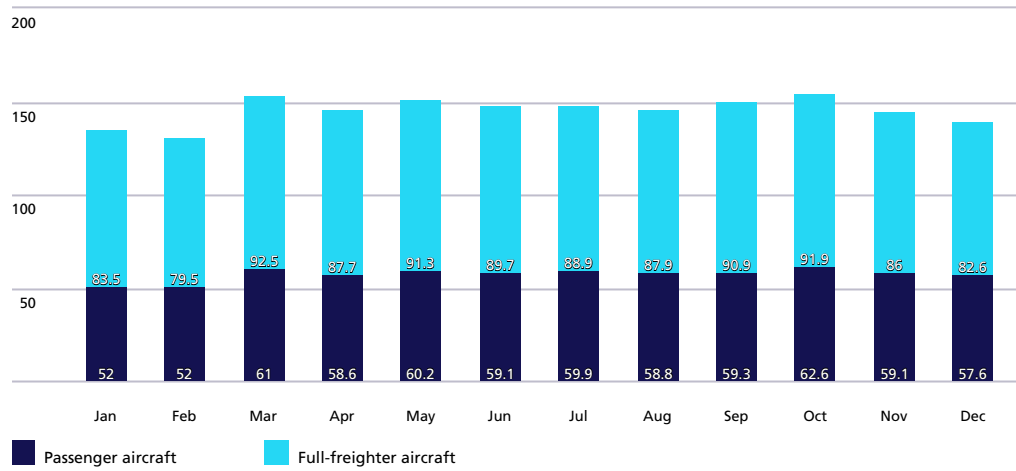


# freight

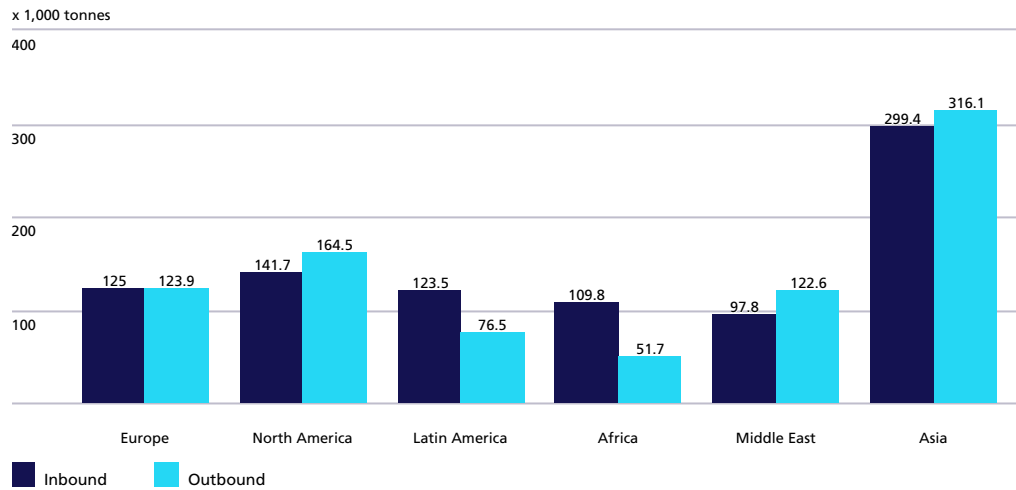
In 2017 the freight volume increased by +5.4% to nearly 1.8 million tonnes. Volume increased both on full freighter (+5.7%) and passenger services (+5.1%).

## Monthly totals per aircraft type

Freight, monthly totals per aircraft type (x1,000 tonnes)



## Annual totals by continent



	2017	Compared to 2016 in %
<b>Total</b>	<b>1,752.6</b>	<b>5.4%</b>
Passenger services	700.2	5.1%
Full-freighter services	1,052.4	5.7%
Inbound	897.2	4.3%
Outbound	855.4	6.6%

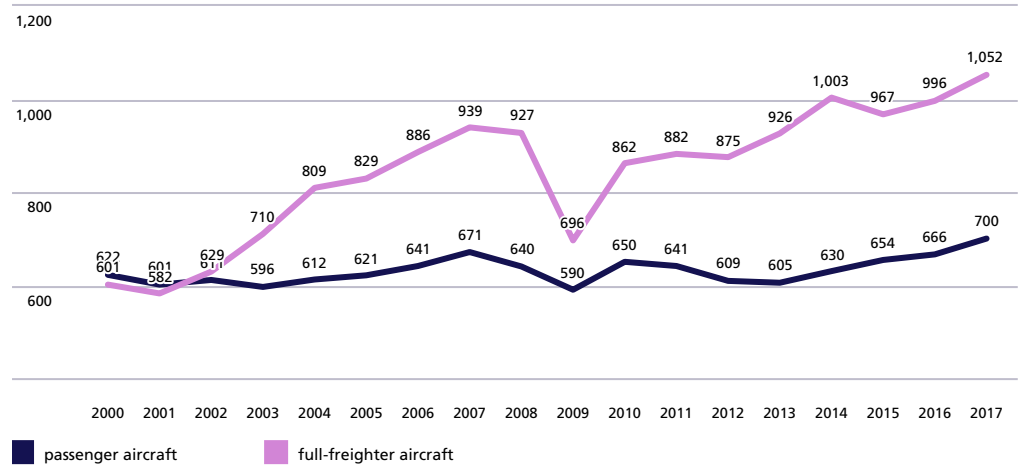
## Freight, main origins and destinations

### Freight, main destinations (tonnes)

Ranking	(2016 ranking)	Airport	IATA code	2017 in tonnes	Compared to 2016 in %
1	(1)	Shanghai	PVG	178,514	3.8%
2	(3)	Moscow	SVO	92,736	24.2%
3	(2)	Nairobi	NBO	84,419	-8.1%
4	(4)	Doha	DOH	63,322	-6.7%
5	(5)	Chicago	ORD	58,244	2.1%
6	(6)	Singapore	SIN	56,486	5.7%
7	(9)	Quito	UIO	46,539	13.6%
8	(16)	Baku	GYD	45,962	60.1%
9	(8)	Guangzhou	CAN	45,627	5.5%
10	(7)	Hong Kong	HKG	44,547	2.2%
11	(11)	Jeddah	JED	39,217	0.3%
12	(10)	Seoul	ICN	39,060	-0.6%
13	(13)	Tokyo	NRT	37,565	2.4%
14	(14)	Abu Dhabi	AUH	36,757	1.3%
15	(15)	New York	JFK	31,832	-0.7%
16	(17)	Taipei	TPE	31,196	11.0%
17	(25)	Dubai	DWC	28,919	29.5%
18	(18)	Houston	IAH	28,531	1.5%
19	(19)	Los Angeles	LAX	27,184	-3.0%
20	(21)	Leipzig	LEJ	26,109	-1.3%

## Annual totals by aircraft type

Annual totals by aircraft type (x 1,000 tonnes)





Departures

# other airports